

# demonstration sheet

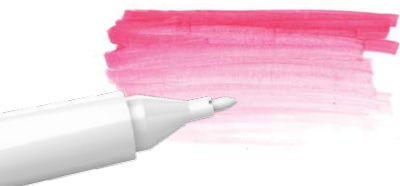


## ① colourless blender

The Colourless Blender creates a water colour effect, like a water colour wash. It can be used to lighten colours and to mix two or more colours. It can also be used to remove colour, create highlights, add effects or correct mistakes.



## ② white blender



The White Blender creates an opaque effect. It can be used to lighten colours.



Use to mix two or more colours.



Use to soften shade and tones, or to add highlights and effects.



Draw on black or coloured paper.

## ③ demonstration tips



To clean the nib during your demonstration simply wipe the marker on a scrap piece of paper until it returns to its original colour.



For optimal blending results use Winsor & Newton Pigment Marker Pads or canvas / canvas board. For best impact, use strong colours which are not too close on colour spectrum when blending with the White Blender.



Use either of the blenders to come back to your work after it is dry. You will notice that it is easy to correct mistakes or add to the work.